

RESOLUTION NO. _____

**RESOLUTION OF THE BOARD OF WEBER COUNTY COMMISSIONERS
DECLINING A REQUEST TO PROVIDE SERVICES IN
THE UNINCORPORATED COUNTY**

WHEREAS, the Board of County Commissioners of Weber County (“Commission”) received a request, under Utah Code Ann. § 17B-1-204, to provide services in the Snowbasin Resort area of unincorporated Weber County, more specifically within the boundaries of the proposed Wheeler Basin Service District (“District”), a map of which is attached hereto; and

WHEREAS, pursuant to Utah Code Ann. § 17B-1-210, the Commission held a public hearing regarding the request on January 25, 2022, with exception to the location and timing requirements established under Subsections (2)(b) and (4), which were waived by 100% of the resident land owners within the District; and

WHEREAS, the Commission has decided to deny the request for services;

NOW THEREFORE, the Commission hereby declines the request services within the boundaries of the proposed District located in unincorporated Weber County.

RESOLVED this 25th day of January 2022.

BOARD OF COUNTY COMMISSIONERS
OF WEBER COUNTY

By _____
Scott Jenkins, Chair

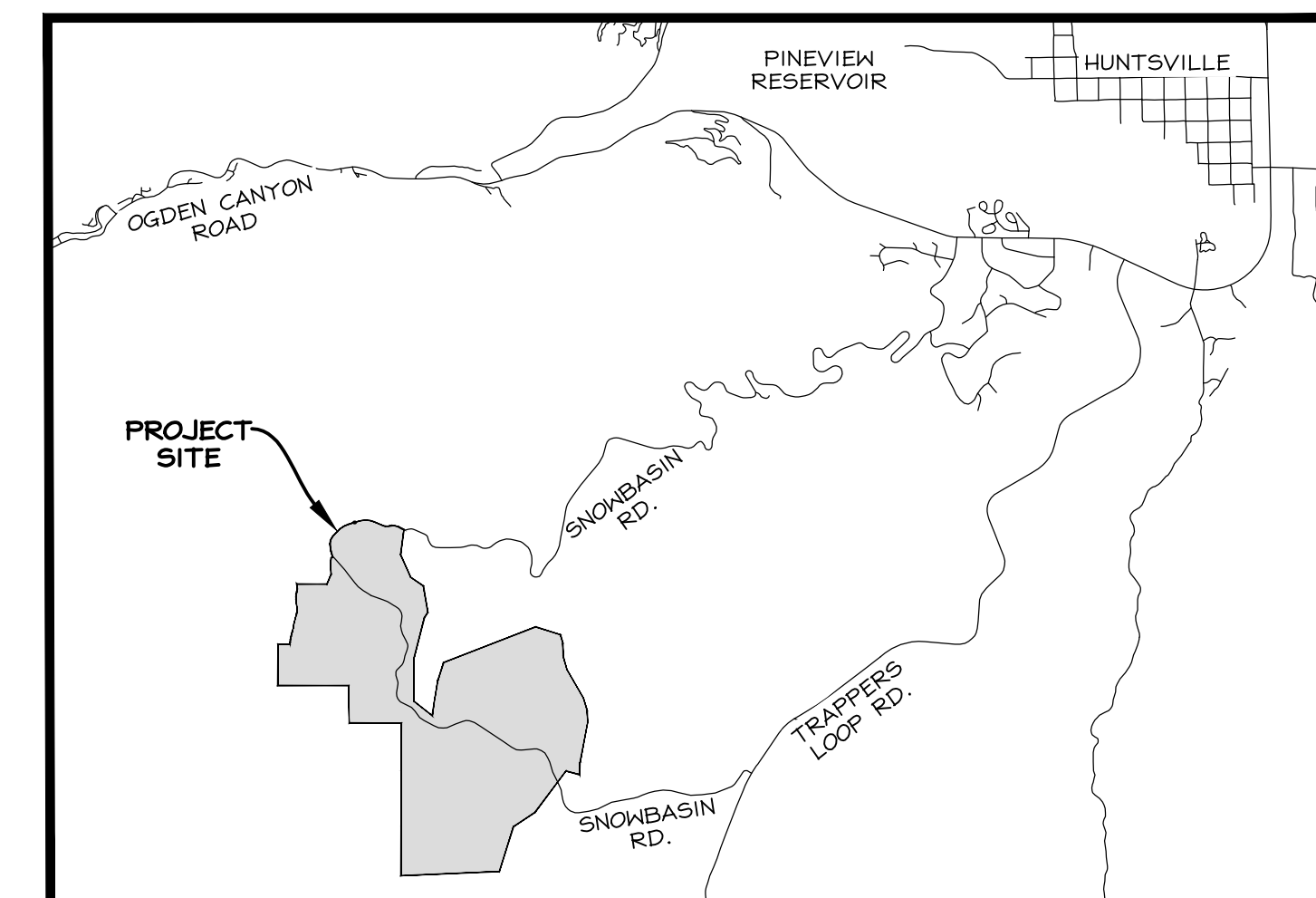
Commissioner Harvey voted _____
Commissioner Jenkins voted _____
Commissioner Froerer voted _____

ATTEST:

Ricky Hatch, CPA
Weber County Clerk/Auditor

ANNEXATION PLAT - WHEELER BASIN DISTRICT RESOLUTION NO.

A PARCEL OF LAND AT SNOWBASIN SKI RESORT SITUATED IN SECTIONS 4, TOWNSHIP 5 NORTH, RANGE 1 EAST; AND ALSO SECTIONS 28, 29, 32, 33, AND 34, TOWNSHIP 6 NORTH, RANGE 1 EAST, SALT LAKE MERIDIAN, WEBER COUNTY, UTAH, JANUARY 2022



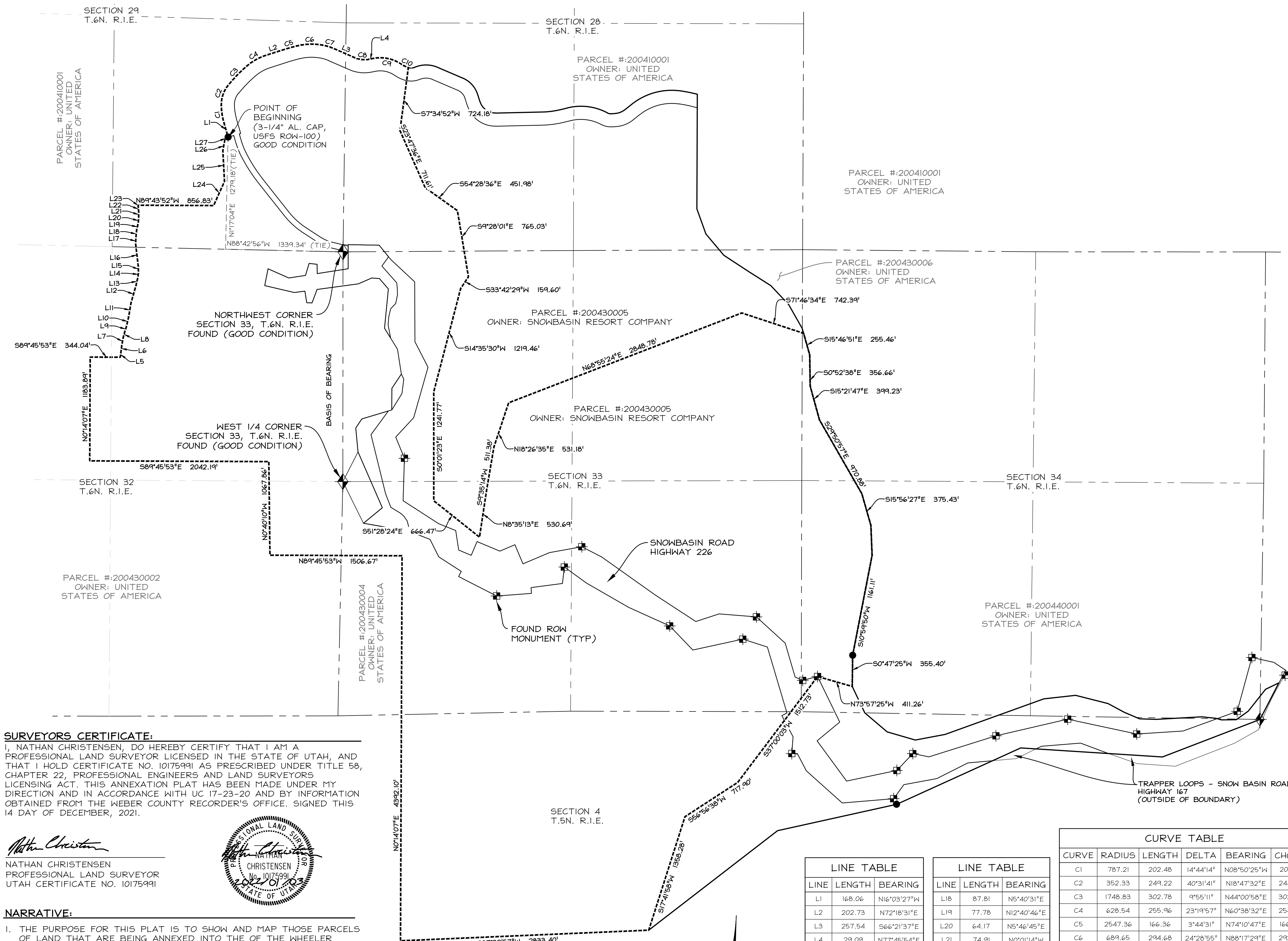
Vicinity Map

BOUNDARY DESCRIPTION:

THE BASIS OF BEARING IS SOUTH 0°02'33" WEST 2620.26 FEET, MEASURED BETWEEN THE FOUND NORTHWEST CORNER AND CALCULATED WEST QUARTER CORNER SECTION 33, TOWNSHIP 6 NORTH RANGE 1 EAST, SLB#11, THIS BEARING WAS MEASURED IN UTAH STATE PLANES NORTH ZONE, US SURVEY FEET.

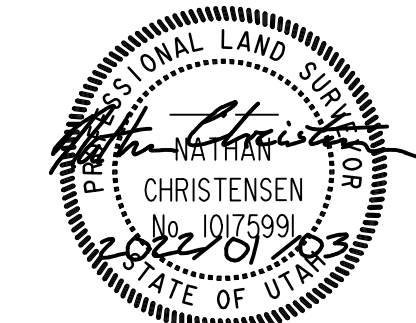
BEGINNING AT A POINT ON THE NORTHERN ROW LINE OF OLD SNOWBASIN ROAD, HIGHWAY 226, SAID POINT BEING A 3-1/4" AL. CAP SET BY THE DEPT. OF AGRICULTURE-US FOREST SERVICE, (STAMPED 100-ROW) AND RUNNING THENCE ALONG SAID NORTHERN ROW FOLLOWING FOURTEEN (14) COURSES; 1) N16°03'27"W 168.06 FEET, 2) THENCE ALONG A 787.21 FOOT RADIUS NON-TANGENT CURVE TO THE RIGHT, (CHORD BEARS N08°50'25"W 201.92 FEET) THROUGH A CENTRAL ANGLE OF 14°44'14", FOR AN ARC DISTANCE OF 202.48 FEET, 3) THENCE ALONG A 352.33 FOOT RADIUS CURVE TO THE RIGHT, (CHORD BEARS N18°47'32"E 244.06 FEET) THROUGH A CENTRAL ANGLE OF 40°31'41", FOR AN ARC DISTANCE OF 249.22 FEET, 4) THENCE ALONG A 1748.83 FOOT RADIUS CURVE TO THE RIGHT, (CHORD BEARS N44°00'58"E 302.40 FEET) THROUGH A CENTRAL ANGLE OF 09°55'11", FOR AN ARC DISTANCE OF 302.78 FEET, 5) THENCE ALONG A 628.54 FOOT RADIUS CURVE TO THE RIGHT, (CHORD BEARS N60°38'32"E 254.20 FEET) THROUGH A CENTRAL ANGLE OF 23°19'57", FOR AN ARC DISTANCE OF 255.96 FEET, 6) THENCE N72°18'31"E 202.73 FEET, 7) THENCE ALONG A 2547.36 FOOT RADIUS CURVE TO THE RIGHT, (CHORD BEARS N74°10'47"E 166.33 FEET) THROUGH A CENTRAL ANGLE OF 03°44'31", FOR AN ARC DISTANCE OF 166.36 FEET, 8) THENCE ALONG A 689.65 FOOT RADIUS CURVE TO THE RIGHT, (CHORD BEARS N88°17'29"E 292.44 FEET) THROUGH A CENTRAL ANGLE OF 24°28'55" FOR AN ARC DISTANCE OF 294.68 FEET, 9) THENCE ALONG A 593.75 FOOT RADIUS CURVE TO THE RIGHT, (CHORD BEARS S72°54'50"E 135.53 FEET) THROUGH A CENTRAL ANGLE OF 13°06'26", FOR AN ARC DISTANCE OF 135.83 FEET, 10) THENCE S66°21'37"E 257.54 FEET, 11) THENCE ALONG A 277.35 FOOT RADIUS CURVE TO THE LEFT, (CHORD BEARS S84°17'51"E 170.84 FEET) THROUGH A CENTRAL ANGLE OF 35°52'31", FOR AN ARC DISTANCE OF 173.66 FEET, 12) THENCE N77°45'54"E 29.09 FEET, 13) THENCE ALONG A 436.50 FOOT RADIUS CURVE TO THE RIGHT, (CHORD BEARS S78°51'52"E 346.34 FEET) THROUGH A CENTRAL ANGLE OF 46°44'51", FOR AN ARC DISTANCE OF 356.14 FEET, 14) THENCE ALONG A 280.88 FOOT RADIUS CURVE TO THE LEFT, (CHORD BEARS S63°51'40"E 81.78 FEET) THROUGH A CENTRAL ANGLE OF 16°44'28", FOR AN ARC DISTANCE OF 82.07 FEET; THENCE LEAVING SAID ROW S07°34'52"W 724.18 FEET; THENCE S23°47'36"E 711.62 FEET; THENCE S54°28'36"E 451.98 FEET; THENCE S9°28'01"E 765.03 FEET; THENCE S33°42'29"W 159.60 FEET; THENCE S14°35'30"E 1219.46 FEET; THENCE S00°01'23" E 1241.77 FEET; THENCE S51°28'24"E 666.47 FEET; THENCE N08°35'13"E 530.69 FEET; THENCE N09°35'14"E 511.38 FEET; THENCE N18°26'35" E 531.18 FEET; THENCE N68°55'24"E 2848.78 FEET; THENCE S71°46'34"E 742.39 FEET TO A POINT ON THE EASTERN LINE OF THE SNOWBASIN PARCEL 200430005; THENCE ALONG SAID EASTERN LINE FOLLOWING EIGHT (8) COURSES; 1) S15°46'51"E 255.46 FEET, 2) THENCE S00°52'38"E 356.66 FEET, 3) THENCE S15°21'47"E 399.23 FEET, 4) THENCE S29°50'57"E 970.88 FEET, 5) THENCE S15°56'27"E 375.43 FEET, 6) THENCE S02°17'25"E 342.90 FEET, 7) THENCE S10°59'50"W 1161.11 FEET, 8) THENCE S00°47'25"W 355.40 FEET, THENCE N12°45'32"E 111.76 FEET, THENCE S37°00'03"W 1512.73 FEET; THENCE S56°56'38"W 717.90 FEET; THENCE S17°41'58"W 1358.28 FEET TO A POINT ON THE SOUTHERN LINE OF SAID PARCEL; THENCE ALONG SAID SOUTHERN LINE S87°32'57"W 2833.40 FEET TO THE SOUTHWEST CORNER OF SAID PARCEL; THENCE ALONG SAID WESTERN LINE OF PARCEL FOLLOWING TWENTY-NINE (29) COURSES N00°14'07"E 4392.10 FEET; 1) THENCE N89°45'53"W 1506.67 FEET, 2) THENCE N00°40'10"W 1067.86 FEET, 3) THENCE N89°45'53"W 2042.19 FEET, 4) THENCE N00°14'07"E 1183.89 FEET, 5) THENCE S89°45'53"E 344.04 FEET, 6) THENCE N06°34'44"E 56.48 FEET, 7) THENCE N07°17'09"E 86.76 FEET, 8) THENCE N10°25'50"E 79.99 FEET, 9) THENCE N14°59'32"E 71.55 FEET, 10) THENCE N17°33'56"E 65.90 FEET, 11) THENCE N12°45'32"E 111.76 FEET, 12) THENCE N09°32'26"E 156.88 FEET, 13) THENCE N15°47'55"E 214.44 FEET, 14) THENCE N13°15'45"E 89.45 FEET, 15) THENCE N06°38'09"E 55.26 FEET, 16) THENCE N02°02'02"W 80.63 FEET, 17) THENCE N06°46'19"W 244.59 FEET, 18) THENCE N01°49'57"E 74.17 FEET, 19) THENCE N05°40'31"E 87.81 FEET, 20) THENCE N12°40'46"E 77.78 FEET, 21) THENCE N05°46'45"E 64.17 FEET, 22) THENCE N00°01'14"W 74.91 FEET, 23) THENCE N06°12'55"W 55.54 FEET, 24) THENCE N14°36'38"E 14.61 FEET, 25) THENCE S89°43'52"E 856.83 FEET, 26) THENCE N24°12'58"E 302.00 FEET, 7) THENCE N03°01'48"W 351.16 FEET, 28) THENCE N10°27'16"E 137.56 FEET, 29) THENCE N61°00'58"E 39.82 FEET TO THE POINT OF BEGINNING

CONTAINING 4,407.6, 407.21 SQ. FT. OR 1,011.855 ACRES



SURVEYORS CERTIFICATE:
I, NATHAN CHRISTENSEN, DO HEREBY CERTIFY THAT I AM A PROFESSIONAL LAND SURVEYOR LICENSED IN THE STATE OF UTAH, AND THAT I HOLD CERTIFICATE NO. 10175991 AS PRESCRIBED UNDER TITLE 58, CHAPTER 22, PROFESSIONAL ENGINEERS AND LAND SURVEYORS LICENSING ACT. THIS ANNEXATION PLAT HAS BEEN MADE UNDER MY DIRECTION AND IN ACCORDANCE WITH UC 17-23-20 AND BY INFORMATION OBTAINED FROM THE WEBER COUNTY RECORDER'S OFFICE. SIGNED THIS 14 DAY OF DECEMBER, 2021.

Nathan Christensen
NATHAN CHRISTENSEN
PROFESSIONAL LAND SURVEYOR
UTAH CERTIFICATE NO. 10175991

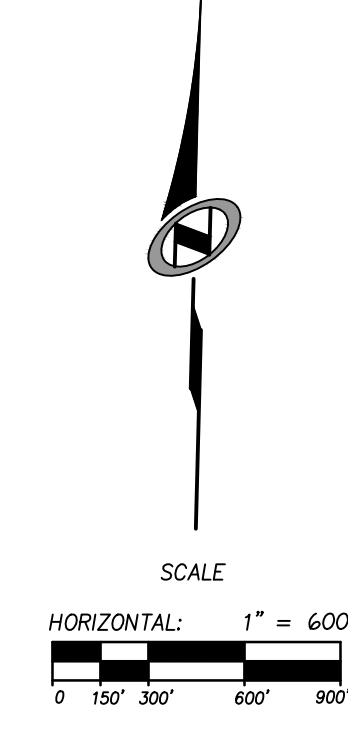
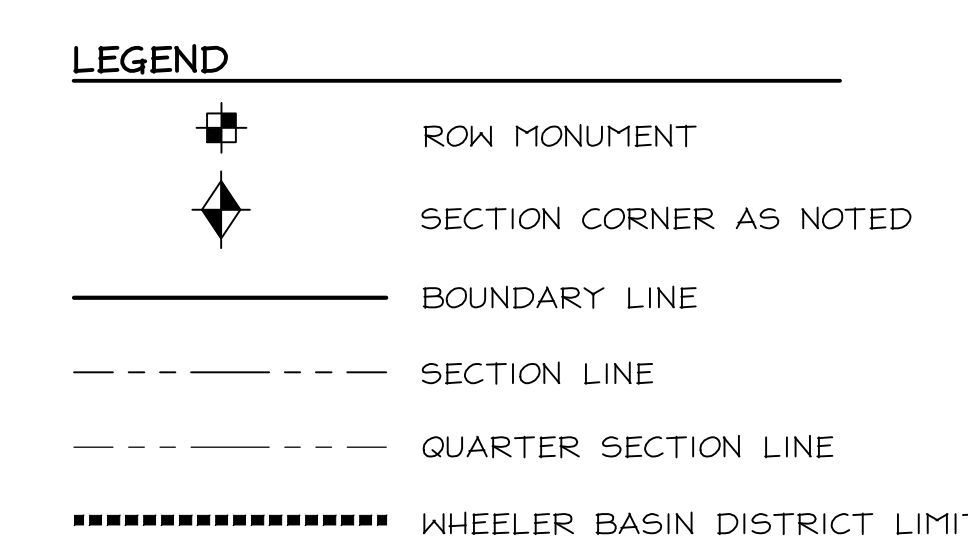


NARRATIVE:

- THE PURPOSE FOR THIS PLAT IS TO SHOW AND MAP THOSE PARCELS OF LAND THAT ARE BEING ANNEXED INTO THE OF THE WHEELER BASIN DISTRICT.
- THIS PLAT IS COMPRISED OF RECORD INFORMATION FROM THE WEBER COUNTY RECORDER'S OFFICE. THIS IS NOT A LAND SURVEY.
- CONTAINING: 1,011.855 ACRES

REFERENCED DOCUMENTS:

- US DEPARTMENT OF AGRICULTURE -FOREST SERVICE, RECORD OF SURVEY NATION FOREST BOUNDARY, WEBER COUNTY SURVEYOR ENTRY #:004037, APRIL 8, 2008
- GENERAL WARRANTY DEED RECORDED DECEMBER 30, 2009 AS ENTRY NO. 2452112 OF OFFICIAL RECORDS.



LINE TABLE

LINE	LENGTH	BEARING
L1	168.06	N16°03'27"W
L2	202.73	N72°18'31"E
L3	257.54	S66°21'37"E
L4	29.09	N77°45'54"E
L5	56.48	N6°34'44"E
L6	86.76	N71°17'09"E
L7	79.99	N10°25'50"E
L8	71.55	S14°59'32"W
L9	65.90	N17°33'56"E
L10	111.76	N12°45'32"E
L11	156.88	N9°32'26"E
L12	214.44	N15°47'55"E
L13	89.45	N13°15'45"E
L14	55.26	N6°38'09"E
L15	80.63	N2°02'02"W
L16	244.59	N6°46'19"W
L17	74.17	N1°49'57"E

LINE TABLE

LINE	LENGTH	BEARING
L18	87.81	N5°40'31"E
L19	77.78	N12°40'46"E
L20	64.17	N5°46'45"E
L21	74.91	N0°01'14"W
L22	55.54	N6°25'35"W
L23	14.61	N14°36'38"E
L24	302.00	N24°12'58"E
L25	351.16	N3°01'48"W
L26	137.56	N10°27'16"E
L27	39.82	N61°00'58"E

CURVE TABLE

CURVE	RADIUS	LENGTH	DELTA	BEARING	CHORD
C1	787.21	202.48	14°44'14"	N08°50'25"W	201.92
C2	352.33	249.22	40°31'41"	N18°47'32"E	244.06
C3	1748.83	302.78	9°55'11"	N44°00'58"E	302.40
C4	628.54	255.96	23°19'57"	N60°38'32"E	254.20
C5	2547.36	166.36	3°44'31"	N74°10'47"E	166.33
C6	689.65	294.68	24°28'55"	N88°17'29"E	292.44
C7	593.75	135.83	13°06'26"	S72°54'50"E	135.53
C8	277.35	173.66	35°52'31"	S84°17'51"E	170.84
C9	436.50	356.14	46°44'51"	S78°51'52"E	346.34
C10	280.88	82.07	16°44'28"	S63°51'40"E	81.78

WEBER COUNTY SURVEYOR

I HEREBY CERTIFY THAT THE WEBER COUNTY SURVEYOR'S OFFICE HAS REVIEWED THIS PLAT AND ALL CONDITIONS FOR APPROVAL BY THIS OFFICE HAVE BEEN SATISFIED. THE APPROVAL OF THIS PLAT BY THE WEBER COUNTY SURVEYOR DOES NOT RELIEVE THE LICENSED SURVEYOR WHO EXECUTED THIS PLAT FROM THE RESPONSIBILITIES AND/OR LIABILITY ASSOCIATED THEREWITH.

SIGNED THIS _____ DAY OF _____, 20____.

WEBER COUNTY SURVEYOR

WHEELER BASIN DISTRICT

THIS PLAT IS APPROVED AS TO FORM

THIS _____ DAY OF _____, 20____.

CHAIRMAN, WHEELER BASIN DISTRICT

TALISMAN CIVIL CONSULTANTS

8217 SOUTH STATE STREET, SUITE 300
801.743.1300 TEL. 801.743.0300 FAX
MURRAY, UT 84107
WWW.NOLTE.COM

RECORDED #

STATE OF UTAH, COUNTY OF WEBER, RECORDED AND FILED AT THE

REQUEST OF: _____

ENTRY NO: _____

DATE: _____ TIME: _____

BOOK: _____ PAGE: _____

FEE \$ _____

WEBER COUNTY RECORDER